



# NEWSLETTER

Week 3, Term Two, 2025

(03)433 1366 email: [office@ardgowan.school.nz](mailto:office@ardgowan.school.nz)

## Principal's Message

Kia ora koutou e te Whanau,

Over the next few weeks teachers will be busy collecting assessment data that will form decisions around our mid year reporting cycle. We would appreciate your support with these by ensuring your children come to school prepared to be the best they can be. You can do this by helping your children get a good night sleep, be at school if they are well, have a full drink bottle and have glasses if they are required.

We look forward to seeing those who can make it along to our school speech competitions next week. The challenges of speeches are wide and varied. For some the writing is the challenge, with others it is standing in front of their peers. It is always great watching the children step up and take on these challenges and face their fears. Our school competitions are as below:

Year 1-2 Poems - Wednesday 21, 9am

Year 3-4 Reading - Friday 23, 1:30pm

Year 5-6 Speech - Friday 23, 9am

Year 7-8 Speech - Tuesday 20, 1:30pm

Ka mihi nui,

Ryan Fraser

Principal

## Drink Bottles.

Recently we have had a large number of children with no drink bottle at school. This means some children are not getting a drink of water until at least morning tea, some don't ask for a cup until lunchtime which means they are already dehydrated.

Could all families please ensure your child has a named drink bottle to bring to school every day, even during the colder months.



Our seniors did some baking last week to put some delicious muffins in the freezer for children who might forget their lunch or need a little something extra.

# School Notices

A couple of reminders for families around drop off and pick up times.

The Drop and Drive area is to be used for Drop and Drive only - NO PARKING.

The car park is for parking to drop off and pick up your child only - NO DROP AND DRIVE.

Please help to keep the children safe by using both areas for their intended purpose only as it creates frustration for other users when they are used inappropriately.

Please drive carefully when in and around our school.

## UNIFORM PRICES

Polo top Size 6 - 16 \$32.50

Polo top Size S, M, L \$37.00

Polar Fleece Size 4 - 14 \$45.00

Polar Fleece Size S, M, L \$54.00

Sunhats \$23.00

Uniform is available to purchase at the office.



Our school event calendar for the year is on our website:

[ardgowan.school.nz/pages/calendar](http://ardgowan.school.nz/pages/calendar)

under the **News and Events Tab** at the top. It is regularly updated with as many dates as possible but please be aware some dates - especially those further on in the year, may change.

## SCHEDULE OF LUNCHES TERM TWO 2025

**MONDAY** Hot Eaties in the pie warmer. (Kowhai, Manuka, Kauri).

Items to be securely wrapped in tin foil and named with a vivid. No Bowls as they take up too much room. Items can be taken to class on the morning and put in the class tray to be transferred to the pie warmer. Please have items defrosted.

**TUESDAY** - Sushi. Order at the school office by 9am each Tuesday. **Correct cash needed**, no change will be given.

**WEDNESDAY** - OWN LUNCH

**THURSDAY** Subway orders every week. Please have orders into the school office by Wednesday mornings. Order envelopes are available at the school office. Correct cash please.

**FRIDAY** Hot Eaties in the pie warmer. (Rimu, Pohutukawa).

Please ensure that your child has a drink bottle at all times of the year. Our school promotes healthy eating whenever possible, a piece of fruit each day, and choosing healthy snack options for your child's lunchbox is a great way to ensure they get the best out of their day. It also greatly helps to cut down on the amount of plastic packaging we have to send to the tip each week.

**Changed your address or phone number? Please let the office know.**

## Important Term 2 Dates for the Diary

School website calendar: [ardgowan.school.nz/pages/calendar](http://ardgowan.school.nz/pages/calendar)

Tues 13th May - BOT Meeting 5:30pm

Wed 14th May - WBHS and WGHS principals visiting our Year 8s 10am.

Mon 19th May - Junior Speeches - TBC

Tues 20th May - Year 7 / 8 speeches 1:30pm

Wed 21st May - WBHS Open Day. Year 1 / 2 poems 9am

Fri 23rd May - Year 5 / 6 speeches from 9am, Year 3 / 4 speeches from 1:30pm

Mon 2nd June - King's Birthday - School closed

Wed 4th June - WRSN Speech Finals WGHS 5pm

Tues - Fri, 10th - 13th June - Tech at OIS Year 7 & 8.

Tues 10th June - North Otago Music Festival

Thurs 19th June - Technology Challenge - Juniors Ardgowan - Seniors Totara

Fri 20th June - Matariki

Mon 23rd June - Firewise program - Junior school

Tues 24th June - BOT Meeting 5:30pm



- **Absentees.** Please inform the school via email, phone or Skool Loop if your child is going to be absent or late to school for any reason. Please expect a phone call or email from our school office if you have not contacted us - this is to ensure all children are safe and is a Ministry of Education requirement which all schools must follow.
- Please keep your child home if they are showing signs of sickness and let the office know.

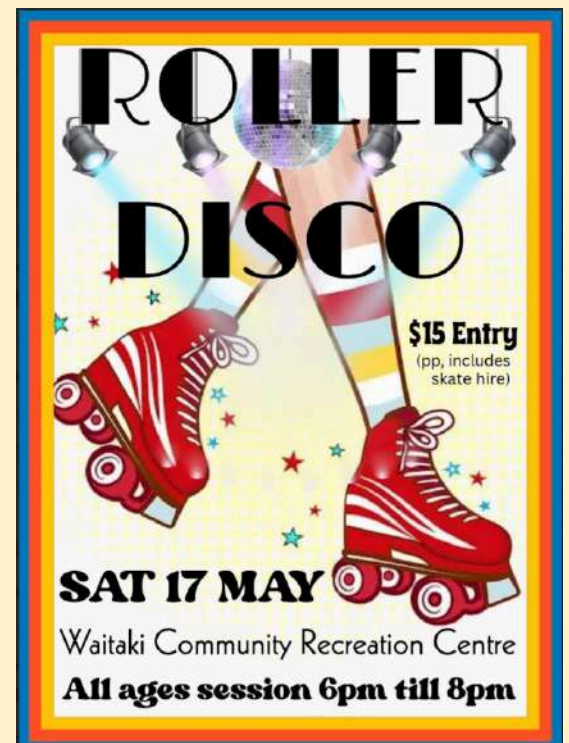
**School and Community Feedback** Our Board of Trustees really values feedback from our school families and community. If you have any comments or feedback please feel free to email [feedback@ardagowan.school.nz](mailto:feedback@ardagowan.school.nz) all communication is treated confidentially

**BUS FAMILIES.** If your child is getting off at a different stop in the afternoon to what they would normally, please give Pearsons a call or inform the school office so we can let the bus driver know. For safety reasons he is unable to drop children off at alternative stops unless prior parental permission is given

**PLEASE DON'T PARK ON THE BERM!** Our neighbours across the road have a lovely area of grass in front of their house, but vehicles parked there cause a considerable safety hazard to the residents and other road users. Tyre marks on their lawn are not appreciated. Your cooperation with this is greatly appreciated.

## SUPPORTING SCHOOLS

BX Foods are excited to partner with our school. For every bobby calf processed through BX Foods, Oamaru, they will donate \$0.50 to our school. To sign up please contact [livestock@bxfoods.co.nz](mailto:livestock@bxfoods.co.nz) and they will send you out a pack to sign up and nominate our school.



We would like to thank the following families and businesses for supporting us through Fuel for Schools

Sammac Pastoral Ltd - Devils Bridge Road

Foxhaven Farms Limited

Temwfer Limited

J H Patterson

Sammac Pastoral Ltd

Arthursley Partners Ltd

Seaview 1899 Limited

Kennedy Carriers Limited

Fox Fert Limited







# CHILDREN'S Event

Mid - South Island Women's Refuge & Family Safety Services

**FREE EVENT FOR THE WHOLE WHANAU!**

**SUNDAY 13<sup>TH</sup> JULY 2025**  
**TIMARU CAROLINE BAY HALL**  
**1PM - 3PM**

ENTERTAINMENT - ANIMALS - BBQ - ICECREAMS  
 CRAFTING - EMERGENCY SERVICES - GAMES - DISCO  
 FACEPAINTING - PRIZES - COMPETITIONS AND HEAPS MORE!!!

**DRESS UP COMPIII**  
 Dress up as your fav superhero!



**YOUTH week**  
 WHAI WHITANGA TAKE OUR PLACE

THE Y CENTRAL SOUTH ISLAND & PARTNERS PRESENT

# SHOWCASE ON SOPHIA

**FRIDAY, 23 MAY 2025 5:30-7:30PM | FREE ENTRY**

## YOUTH PERFORMERS WANTED

BANDS | SINGERS | KAPAHAKA | DANCERS  
 MUSICIANS | POETS | GROUPS | INDIVIDUALS

**12-24 YEARS OLD? HERE'S YOUR CHANCE TO FLEX YOUR TALENT**



**SCAN TO SIGN UP TO PERFORM**  
<https://bit.ly/4lmXd16>

TIMARU DISTRICT COUNCIL | the Y CENTRAL SOUTH ISLAND | FIRE EMERGENCY

For info contact: Jo Skudder | jo@ymcasc.org.nz | 027 619 8379



OAMARU PERFORMING ARTS SOCIETY INC

**Oamaru Opera House**  
**May 16th, 17th 18th**  
**Free Entry**  
**Come and support our young performers**  
*Highland dancing, Ballet, Tap, Modern, Hip Hop, Speech, Song, Instrumental and Musical Theatre.*  
**A weekend of entertainment**



WAITAKI EVENT CENTRE TRUST

# Kid's DISCO NIGHT

**FRIDAY, JUNE 27**  
**LOAN AND MERC**  
**HARBOUR STREET, OAMARU**  
 FUNDRAISING FOR THE NETWORK WAITAKI EVENT CENTRE

**ONE NIGHT - TWO DISCOS**

|  |  |
|--|--|
| <b>YEARS 1-4</b><br>5:00-6:30PM<br><small>All children must be accompanied by an adult</small> | <b>YEARS 5-8</b><br>7:00-8:30PM<br><small>No Passouts<br/>Safe and secure event with supervision</small> |
|--|--|

**\$5 ENTRY AT THE DOOR**  
**INCLUDES A GLOW STICK**  
 Food for sale on the night  
 Popcorn, Drinks, Lollies and Hot chips - all \$2 each  
**ADDITIONAL GLOW STICKS FOR SALE**